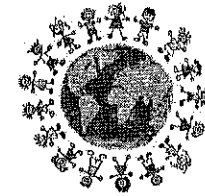
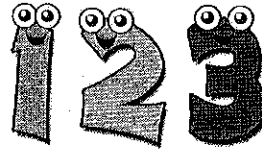


**Bridgman Elementary School**

**PROGRESSIVE 5's (PRO-5's)  
CURRICULUM**

---



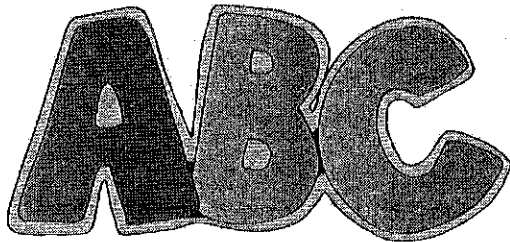
**LANGUAGE ARTS / WRITING:**

**Curriculum Used:**

- Zoophonics
- Macmillan/McGraw-Hill Little Treasures

**Skills Taught:**

- Recognize and name all lower case / upper case letters in the alphabet
- Say the most common sound for each letter
- Recognize that words with the same end sound rhyme
- Read common words without having to sound them out (sight words)



**MATH:**  
**Everyday Mathematics Program**

**Curriculum Used:**

- Everyday Math

**Skills Taught:**

- Count objects in a group regardless of arrangement and order (Up to 10 objects)
- Count to 50 by ones
- Read numerals to 10
- Identify and name 2D shapes (square, circle, rectangle, triangle, rhombus, hexagon)
- Sort by size, shape and color
- Identify simple patterns: AB, ABB, ABC
- Describes numbers as more/less (most/least)
- Calendar Concepts:
  - Days of the week
  - Months of the year
  - Today/Yesterday/Tomorrow
  - Weather Graph

**ADDITIONAL CURRICULUM:**

- Music
- Art
- Physical Education
- Library

**SOCIAL STUDIES / SCIENCE:**  
**Macmillan / McGraw-Hill  
(Little Treasures)**

- Who We Are
- Making Friends
- Families
- Food
- Our Neighborhood
- Transportation
- Animals Around Us
- Nature
- Animals In The Wild
- Health and Fitness
- Scholastic Publication "Let's Find Out"

BRIDGMAN ELEMENTARY  
SCHOOL  
PROGRESSIVE 5's PROGRAM

MISSION OF THE DISTRICT

*"The Bridgman Public School Community  
will provide opportunities for life-long  
learning"*

BRIDGMAN ELEMENTARY  
SCHOOL  
MISSION STATEMENT

*"Bridgman Elementary School is committed  
to providing a learning environment that  
cultivates academic, physical, social and  
emotional growth of young children, while  
building the foundation for life-long learning.*

*Bridgman Elementary School staff, parents  
and community help our students develop  
the skills necessary to become competent,  
compassionate, respectful and responsible  
individuals who encourage one another to  
succeed in today's global society."*

PROGRESSIVE 5's SCHEDULE:

Building Opens.....7:25 a.m.  
Classroom Opens.....7:35 a.m.  
Tardy Bell.....7:45 a.m.  
School Ends.....2:50 p.m.  
Office Closes.....3:30 p.m.

Half Day Dismissal....11:10 a.m.

2-HOUR DELAY SCHEDULE:

Doors Open.....9:25 a.m.  
Classrooms Open.....9:35 a.m.  
Tardy Bell.....9:45 a.m.  
School Ends.....2:50 p.m.

- NO Breakfast will be served  
on 2-hour delay days
- Lunch schedule remains  
the same.

BRIDGMAN ELEMENTARY SCHOOL

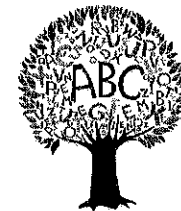
3891 Lake Street  
Bridgman, MI 49106

Office: (269) 466-0241  
Fax: (269) 466-0248

PLEASE VISIT OUR WEBSITE:

[WWW.BRIDGMANSCHOOLS.COM](http://WWW.BRIDGMANSCHOOLS.COM)

BRIDGMAN  
PUBLIC  
SCHOOLS



BRIDGMAN  
ELEMENTARY SCHOOL

Progressive 5's (Pro-5's)  
Program

*(A full-day academic program)*



*"Together, challenging our  
children to succeed"*